

PRODUCT SHEET Fixed Bollards and Removable Bollards

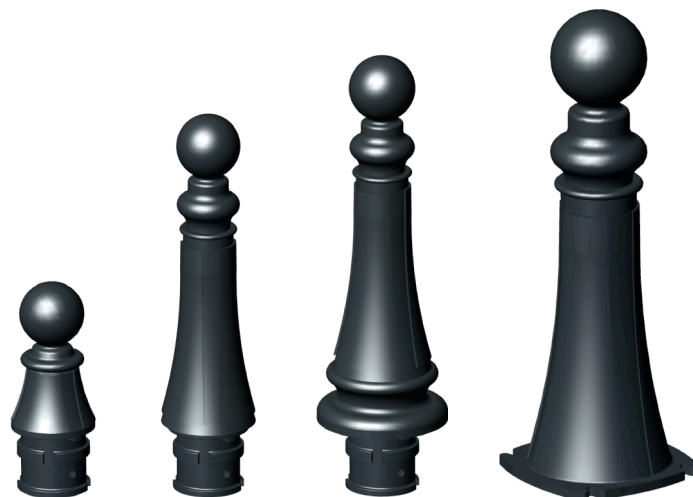
Traditional 'ARLES' (also referred to as 'ARLÉSIENNE')

URBACO

AUTOMATIC BOLLARDS



Fixed Arles bollards with eyelets and chains
9.4 H35.4



Impact Resistance		Weight	
Depending on embedding		From 26 to 99 lbs	
Material		Wall Thickness	
Ductile Cast Iron (G) Grey Cast Iron (F)		0.43 in	

DESCRIPTION

The Arlésienne bollard is available in 3 different diameters (6.1, 7.0 and 9.4 in) and 4 heights above ground (11.4, 23.6, 27.5 and 35.4 in) depending on model. It is available as removable or permanent fixed bollard, but it can also be bolted (See below).

The removable bollards coupled with their Fixator® (an Urbaco patent) is removable without any special or additional tool: a key is all it takes. A locking system will deter non-authorized would-be users to open the access. A turn of the key is enough to unlock the bollard and remove it from its socket. The Fixator cover is placed instead, clearing the way for free access.

Fixed bollards are available as bollard to be embedded and or to be bolted.

Bollards to be embedded are fitted out with a male socket allowing good anchoring underground; bollards to be bolted have a flat base with 4 notches where anchoring bolts (not supplied) can be positioned.

SURFACE FINISH

Thermosetting polyester powder coating, matt finish.

Standard color: Charcoal grey RAL 7016

Option:

Zinc primer to increase resistance to oxidation as well as to reinforce finishing coating adherence.

Access control in 3 steps:

1. Unlock
2. Turn and
3. Lift

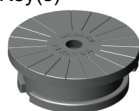
This is a simple and effective solution to restrict access to any area with a small budget. The Fixator® is embedded in concrete at finished grade level. Impact resistance therefore mostly depends on the quality of the anchoring of Fixator® in the ground.

OPTIONS

- Colors: other RAL shade
- Fixed rings and chains

For removable bollards:

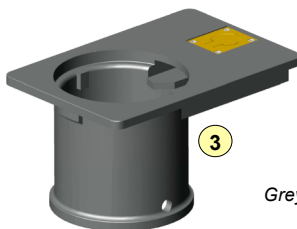
- Fixator® (T11, T14, DL, special 'A')
- Fixator® without lock
- Fixator® cover
- Key(s)



1



2



3

Caption:

1. Fixator® cover
2. Fixator® without lock
3. Fixator® with lock

Grey Cast Iron (Flake Graphite) (GL): F

Grey cast irons contain graphite flakes. Their qualities are:

- Easy machining
- Tendency to "damp" mechanical vibrations
- Good water tightness
- Good quality castings

Ductile Spheroidal Graphite Cast Iron (GS): G

Tiny amounts of magnesium added to these alloys slow down the growth of graphite precipitates by bonding to the edges of the graphite planes. The properties are similar to malleable iron but parts can be cast with larger sections. Its qualities are slightly similar to steel. Additional qualities are:

- Very high resistance
- Ductility (the property of material to endure plastic distortion without breaking)
- Elasticity

ARLES BOLLARD MODELS

		REMOVABLE	TO BE EMBEDDED	TO BE BOLTED
H11.4	6.1	BAALSD29G	BSALSD29G	---
H23.6	7.0	BAALSD60F BAALSD60G	BSALSD60F BSALSD60G	---
H27.5	9.4	BAALSE70F BAALSE70G	BSALSE70F BSALSE70G	---
H35.4	9.4	---	---	BBALSE90F

Urbaco Americas – A CAME Company
11345 NW 122nd Street | Medley, FL 33178
Tel. 305-433-3307 | Fax 305-396-3331

e-mail: info@urbaco-americas.com | www.urbaco-americas.com



ARLES Fixed

Intellectual Property of URBACO – Not to copy – Specifications are not contractual – Changes likely to be made without any notice – Most of the models shown are registered.