

PRODUCT SHEET Permanent Fixed and Removable Bollards

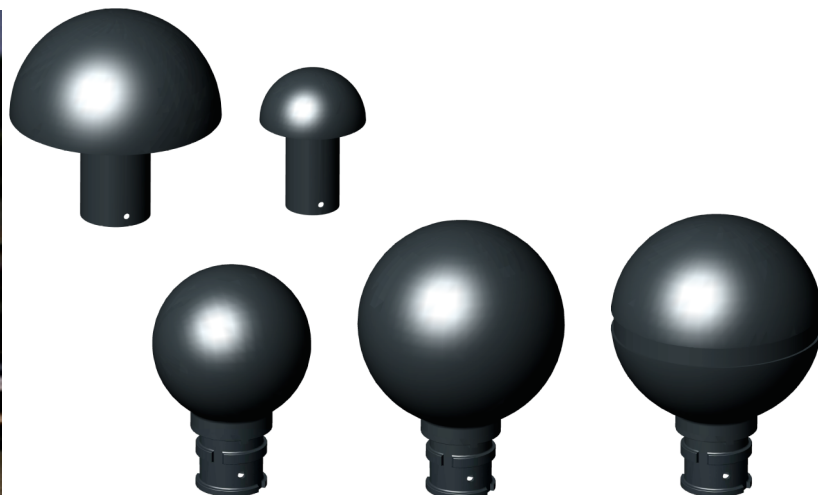
Tradition SPHERE, SPHERE EQUATOR, SEMI-SPHERE

URBACO

AUTOMATIC BOLLARDS



Permanent fixed Sphere 15.7 bollards.



Impact Resistance		Weight	
Depending on embedding		From 26 to 101 lbs	
Material		Wall Thickness	
Ductile Cast Iron (G), Grey Cast Iron (F), Aluminium Cast (A)		0.31 to 0.43 in	

DESCRIPTION

The Sphere bollard is available in 3 different models: sphere, sphere equator and semi-sphere, 3 diameters (Ø7.87, Ø11.8 and Ø15.7 mm), 4 heights above ground (3.93, 7.87, 11.81 and 15.7 mm) depending on model. It is available as permanent fixed or removable bollard (see table chart).

The removable bollards coupled with their Fixator® (an Urbaco patent) is removable without any special or additional tool: a key is all it takes. A locking system will deter non-authorized would-be users to open the access. A turn of the key is enough to unlock the bollard and remove it from its socket. The Fixator cover is placed instead, clearing the way for free access.

Bollards to be fixed and embedded are fitted out with a male socket allowing good anchoring underground

SURFACE FINISH

Thermosetting polyester powder coating, matt finish.

Standard color: Charcoal grey RAL 7016

Option:

Zinc primer to increase resistance to oxidation as well as to reinforce finishing coating adherence.

Access control in 3 steps:

1. Unlock
2. Turn and
3. Lift

This is a simple and effective solution to restrict access to any area with a small budget. The Fixator® is embedded in concrete at finished grade level. Impact resistance therefore mostly depends on the quality of the anchoring of Fixator® in the ground



Grey Cast Iron (Flake Graphite) (GL): F
Grey cast irons contain graphite flakes.

Their qualities are:

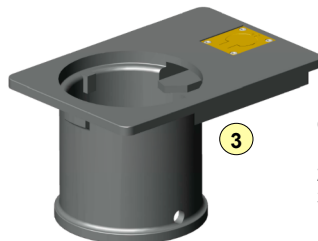
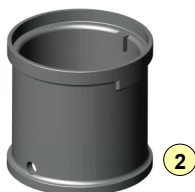
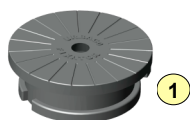
- Easy machining
- Tendency to "damp" mechanical vibrations,
- Good water tightness
- Good quality castings

OPTIONS

- Colors: other RAL shade
- Fixed rings and chains

For removable bollards:

- Fixator® (T11, T14, DL, special 'A')
- Fixator® without lock
- Fixator® cover
- Key(s)



Caption:

1. Fixator® cover
2. Fixator® without lock
3. Fixator® with lock

		REMOVABLE MODELS		PERMANENT FIXED MODELS		
		SPHERE	SPHERE EQUATOR	SPHERE	SPHERE EQUATOR	SEMI-SPHERE
Ø200	H100	---	---	---	---	BSDMSE
Ø300	H300	BASPHG30F BASPHG30G	---	BSSPHG30G BSSPHG30F	---	---
Ø400	H200	---	---	---	---	BSDMSH
Ø400	H400	BASPHH40G*	BAEQTHG BAEQTHA	BSSPHH40G	BSEQTHG	---

Ductile Spheroidal Graphite Cast Iron (GS): G
Tiny amounts of magnesium added to these alloys slow down the growth of graphite precipitates by bonding to the edges of the graphite planes. The properties are similar to malleable iron but parts can be cast with larger sections. Its qualities are slightly similar to steel. Additional qualities are:

- Very high resistance
- Ductility (the property of material to endure plastic distortion without breaking)
- Elasticity

Aluminium cast: A

- Reduces the bollard's weight. It is therefore easier to handle.

Urbaco Americas – A CAME Company
11345 NW 122nd Street | Medley, FL 33178
Tel. 305-433-3307 | Fax 305-396-3331

*: Only with lockless Fixator.